

KOENIG & BAUER

Evo XC – The new standard in compact CI flexo presses



we're on it.

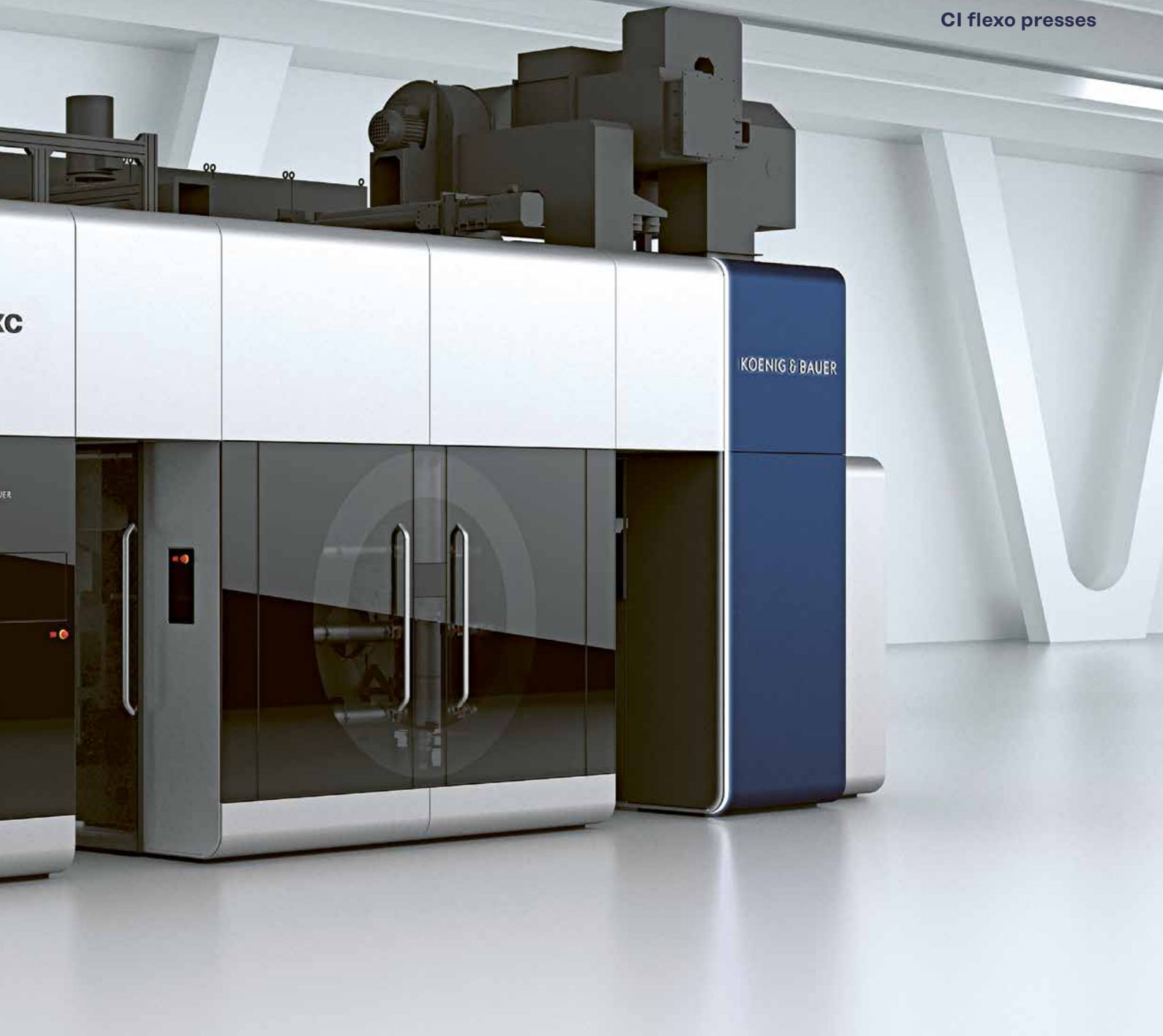


Evo XC

The compact CI flexo press

The Evo XC is the brand-new compact and high-performance CI flexo press which continues the success story of the well-established Evo model range. The new 8-color press with one of the smallest footprints in the industry is available in two different versions with a maximum repeat length of up to 850 mm and printing speeds up to 400 m/min. The machine concept is ideally suitable for profitable short as well as mid-sized print runs

using plastic films, paper and laminates. The Evo XC is aimed at flexible packaging printers who are seeking a space-saving solution and considerable energy savings at the same time. Low investment costs make this small-sized machine attractive as a supplementary press to an existing wide-web machine park in order to achieve a new level of cost-efficiency. In general, this press represents state-of-the-art technology for newcomers as well as



experienced printers (e.g. from the rotogravure industry) who want to enter the CI flexo market in a budget-friendly way.

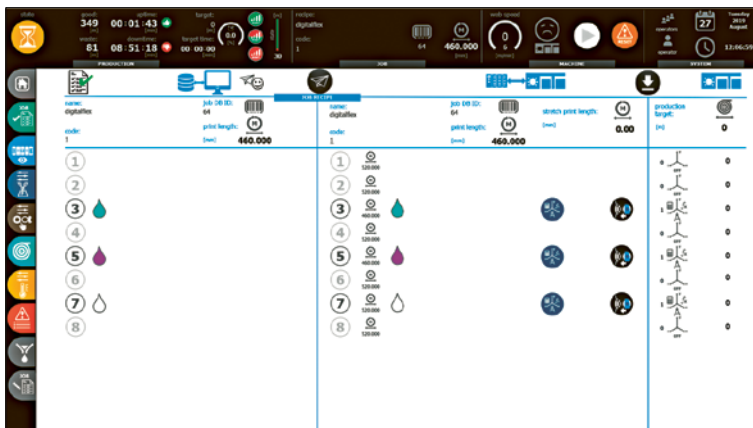
Traditionally solid machine engineering in combination with the intuitive HMI, reduced footprint, completely new dryer concept as well as the latest digital Industry 4.0 features herald a new era in terms of output efficiency, production uptime and operator-friendliness.

Key Features

Iconic Machine Design

The demands placed on equipment by the packaging market are constantly changing. Not only technical excellence, but also ergonomics and optical design are becoming ever more important. The clearly structured printing press with a highly individual – yet sophisticated – industrial design language –increases safety whilst at the same time reducing failures in operator workflow thanks to a new level of accessibility to equipment. In addition, the clear and minimalist design concept is more engaging to employees with a modern work space where the focus is on the operator. For example, despite the large central cylinder for high-performance drying, sleeve handling during the changeover, or work on the doctor blade chamber, can be easily done without any steps which makes operation safer and more efficient.

Moreover, Koenig & Bauer has taken a revolutionary approach for CI flexo in terms of improved material flow in the printing process. Reel loading and unloading are completely separate, which streamlines print production. This new strategy can improve intralogistics in the manufacturing process and increase safety at the same time.



Human Machine Interface (HMI)

Human Machine Interface

In line with Koenig & Bauer corporate design, a new intelligent HMI with large 24-inch touch screens has been introduced to promote simple and intuitive job data input and control of the press functions. This well-structured interface takes user experience to a new level for efficient control of such parameters as press speed, substrate tension, dryer temperature, impression and register settings and much more. And from any position around the press.

PrintTronic – The Automatic Impression Settings

The next enhanced generation of this proven technology ensures automatic control of print impression positions with minimized material waste and increased production uptime. Integrated in the HMI, PrintTronic delivers practical benefits for the operator. Benefits include quicker printing impression adjustment on all printing decks at once, no requirement for video cameras or additional external equipment, no need for dedicated marks or sleeves, no ink consumption during the process and compatibility with any type of material, plates or inks.

Doctor Blade Chamber

Smooth and consistent doctoring of the anilox is essential for constant and reproducible printing. We have developed a chamber doctor blade system which is generally suitable for use without modification – regardless the printing application – and achieves outstanding printing results. Adjustments are made automatically for accurate and fast job changeovers. A fast clamping system and extra long-lasting doctor blades make for easy operation and low maintenance. An optimized interior geometry of the chamber with a reduced volume results in additional ink savings and ensures smooth operation with hardly any ink spitting.



Quick and clean blade change with an advanced clamping system

DryTronic – The Drying System

The printing industry demands efficient drying of solvents and water-based inks for both inter-deck as well as final dryer stages. In order to meet these demands, Koenig & Bauer has introduced an enhanced inter-color drying



Optimized configuration creates homogenous heat transfer and improves drying capacity

system for an efficient heat transfer to the web whilst at the same time reducing heat loss. Thanks to an optimized configuration, the dryers generate effective airflow – even at high printing speeds – to promote homogeneous drying. Accurate temperature control of the system ensures constant drying and low energy consumption without sacrificing print quality or damaging the web. An important benefit of the novel drying system between colors is its compact and ergonomic design which improves

operator-friendliness for maintenance and cleaning.

At the final dryer stage, a newly designed drying tunnel comes into play for outstanding drying capacity, which is particularly beneficial when using water-based inks and printing on plastic films. The concept is based on a bi-level arrangement of the drying elements which dramatically reduces the footprint of the machine. Besides that, its compact design made it possible to reduce the total substrate travel length in the machine to such an extent that a considerable waste reduction can be achieved during start-up. At the same time, due to clever engineering, accessibility to the drying units has been improved, which simplifies maintenance tasks.



Bi-level drying tunnel with a small footprint and outstanding drying capacity



WashTronic – The Inking and Washing System

The **WashTronic** system optimizes the inking supply and allows the ink to be changed more quickly. Thanks to less ink in the circuit, a higher productivity level can be achieved, especially with increasingly shorter jobs. The integrated arrangement of the system reduces the total footprint of the press whilst remaining ergonomic for the operator at the same time.



AR-DataGlass – remote maintenance for your printing press

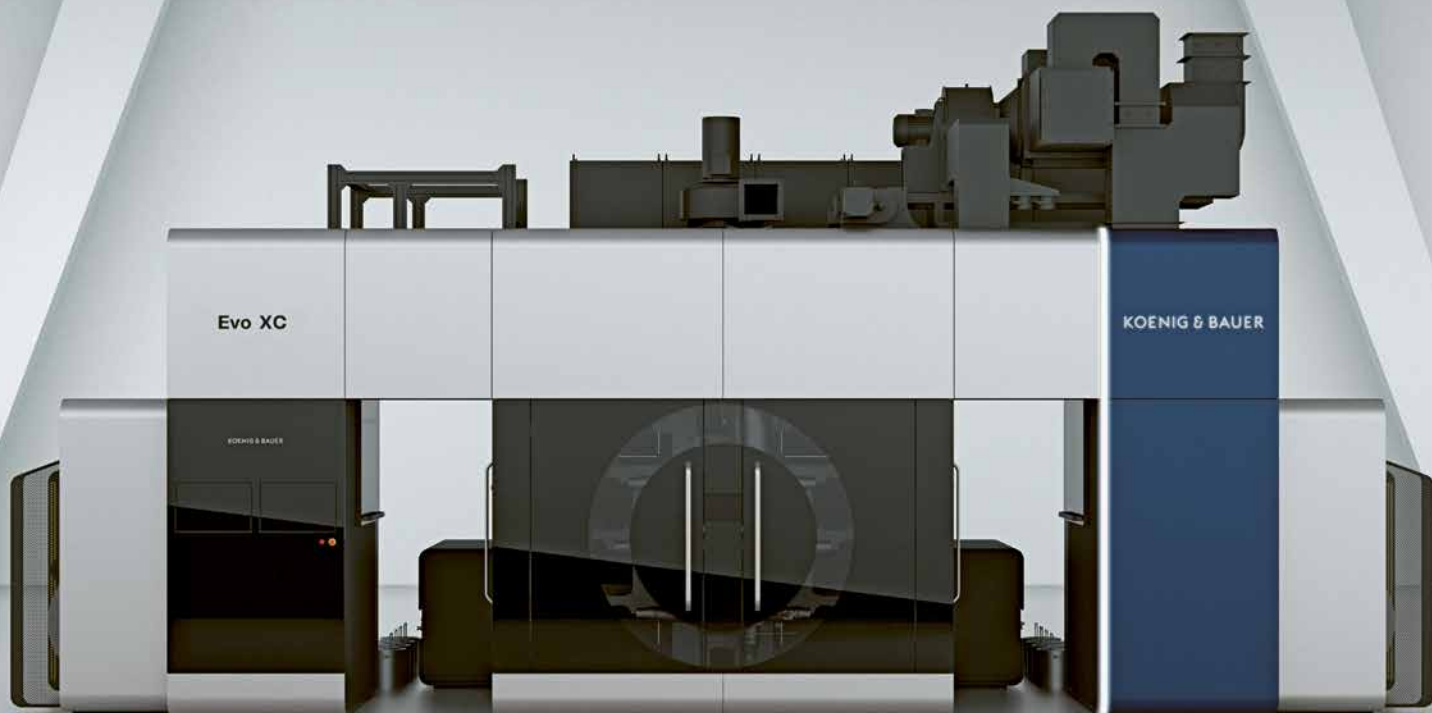
Augmented Reality – AR-DataGlass

In line with the Industry 4.0, this machine is equipped with an enhanced service tool which enables efficient communication between your operator or maintenance technician and Koenig & Bauer customer care. Via Cloud, our professionals connect quickly with your staff on site and provide real-time support using HD camera, headset and microphone.

Energy Recovery Package

High efficiency BOSCH-Rexroth brushless motors with inverters and regenerative drives, optimized systems for air and energy recovery are just a few of the valuable energy-saving solutions implemented in the Evo XC in order to use natural resources wisely and protect our environment for the benefit of future generations.





Technical data

Evo XC Series

Performance data / System	Evo XC	Evo XC Max
Number of printing decks	8	8
Printing width (mm)	620 up to 1020	820 up to 1420
Web width (mm)	650 up to 1050	850 up to 1450
Repeat length (mm)	260 up to 650 (800)	330 up to 850
Max. Printing speed (m/min)	350	400
Ink systems	solvent, water-based	

Options

Automatic reel changer (stand-alone or turret type)
Corona treatment
Re-print / Insetting
Turning bar (8+8)
100 % print inspection

